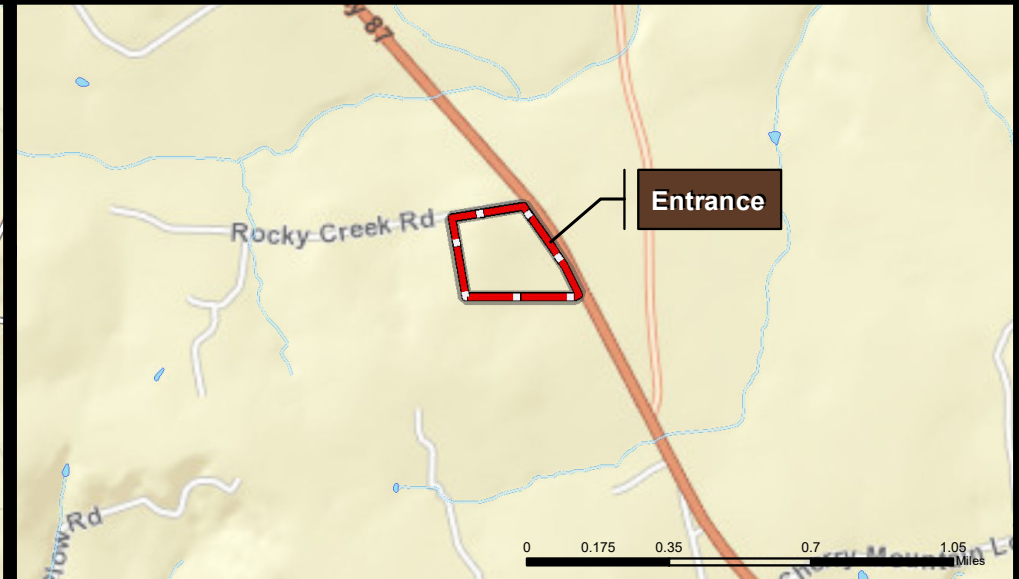
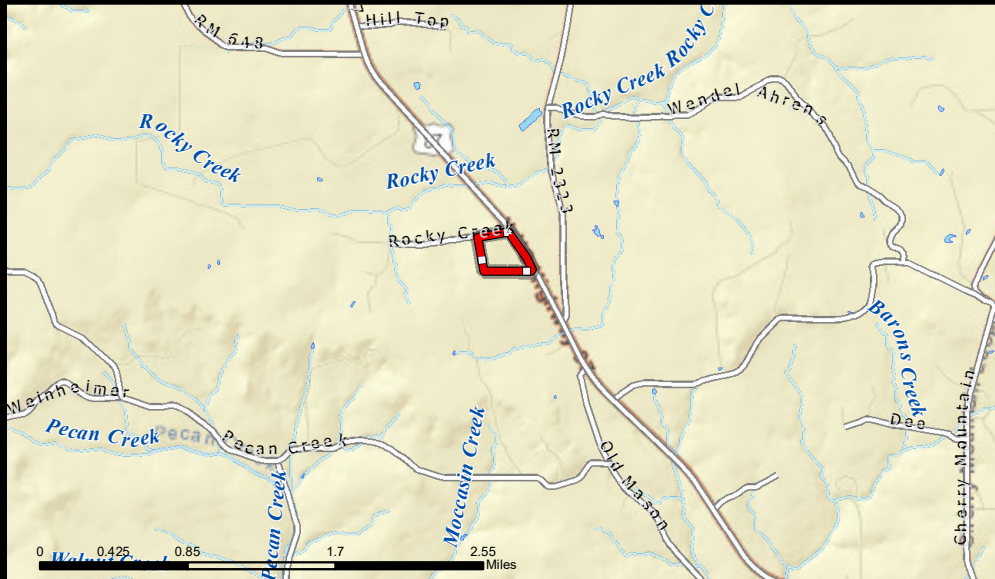


STONEFIELD RANCH | 23.84 ± AC | GILLESPIE



1 inch = 2,500 feet



112 N. Edison St., Fredericksburg, TX 78624
Jeremy Lacy (830) 225-0595
www.AndersRanchRealty.com

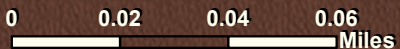


Anders Realty
PURVEYORS OF FINE TEXAS RANCHES

STONEFIELD RANCH | 23.84 ± AC | GILLESPIE



1 inch = 187.5 feet

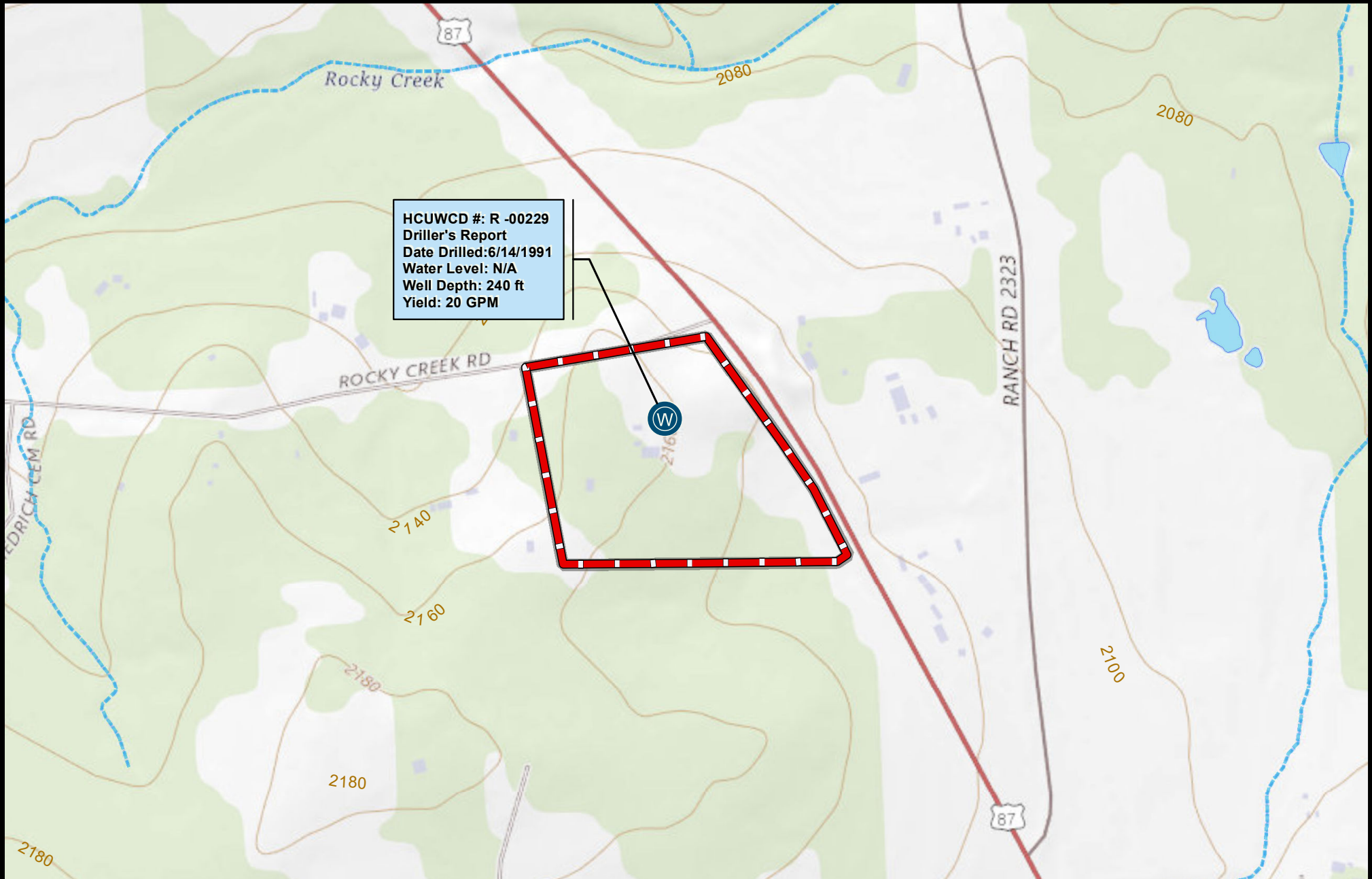


112 N. Edison St., Fredericksburg, TX 78624
Jeremy Lacy (830) 225-0595
www.AndersRanchRealty.com



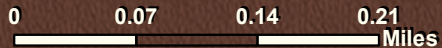
Anders Realty
PURVEYORS OF FINE TEXAS RANCHES

STONEFIELD RANCH | 23.84 ± AC | GILLESPIE



HCUWCD #: R -00229
Driller's Report
Date Drilled: 6/14/1991
Water Level: N/A
Well Depth: 240 ft
Yield: 20 GPM

1 inch = 583.33 feet

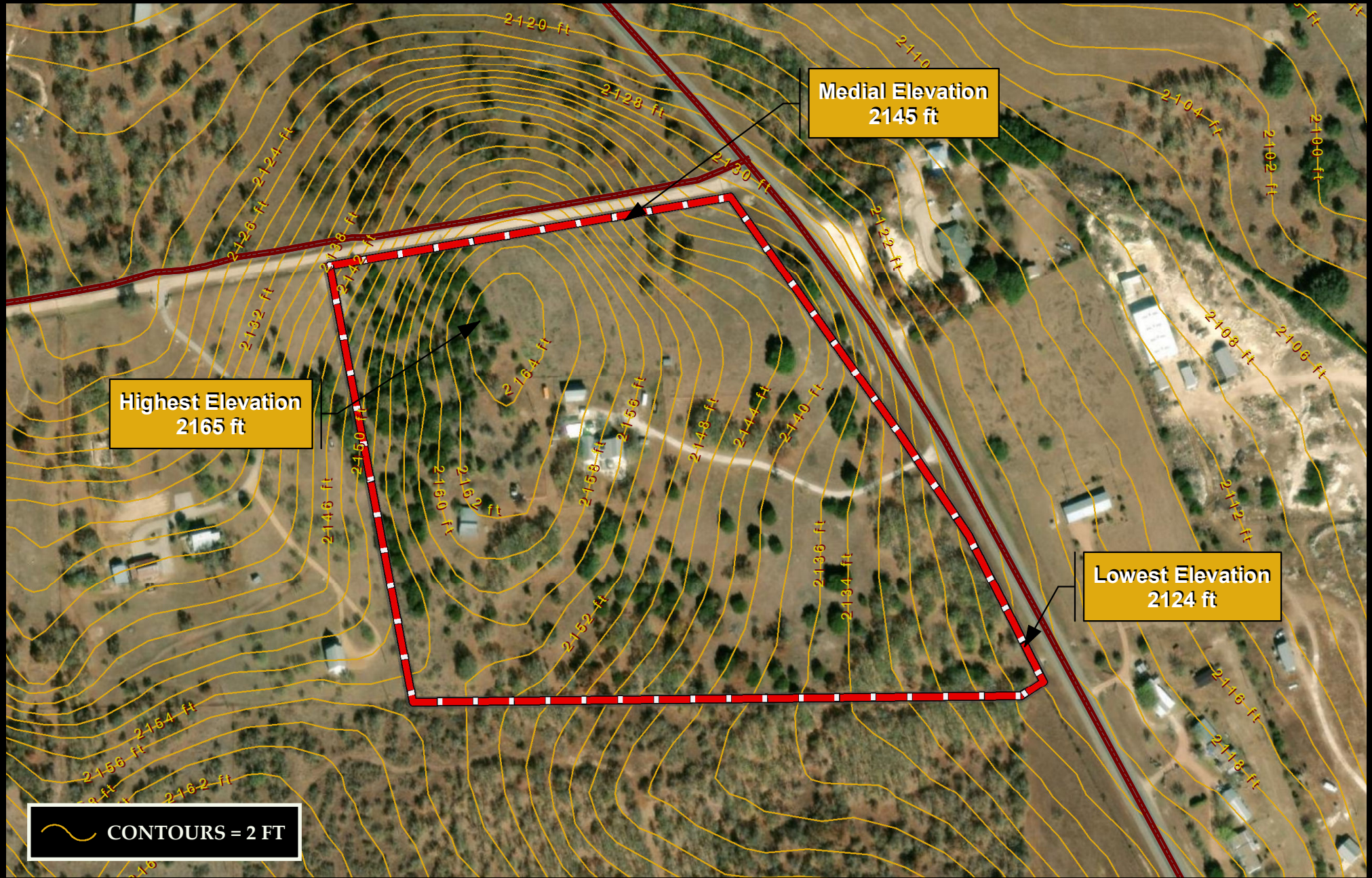


112 N. Edison St., Fredericksburg, TX 78624
Jeremy Lacy (830) 225-0595
www.AndersRanchRealty.com



Anders Realty
PURVEYORS OF FINE TEXAS RANCHES

STONEFIELD RANCH | 23.84 ± AC | GILLESPIE

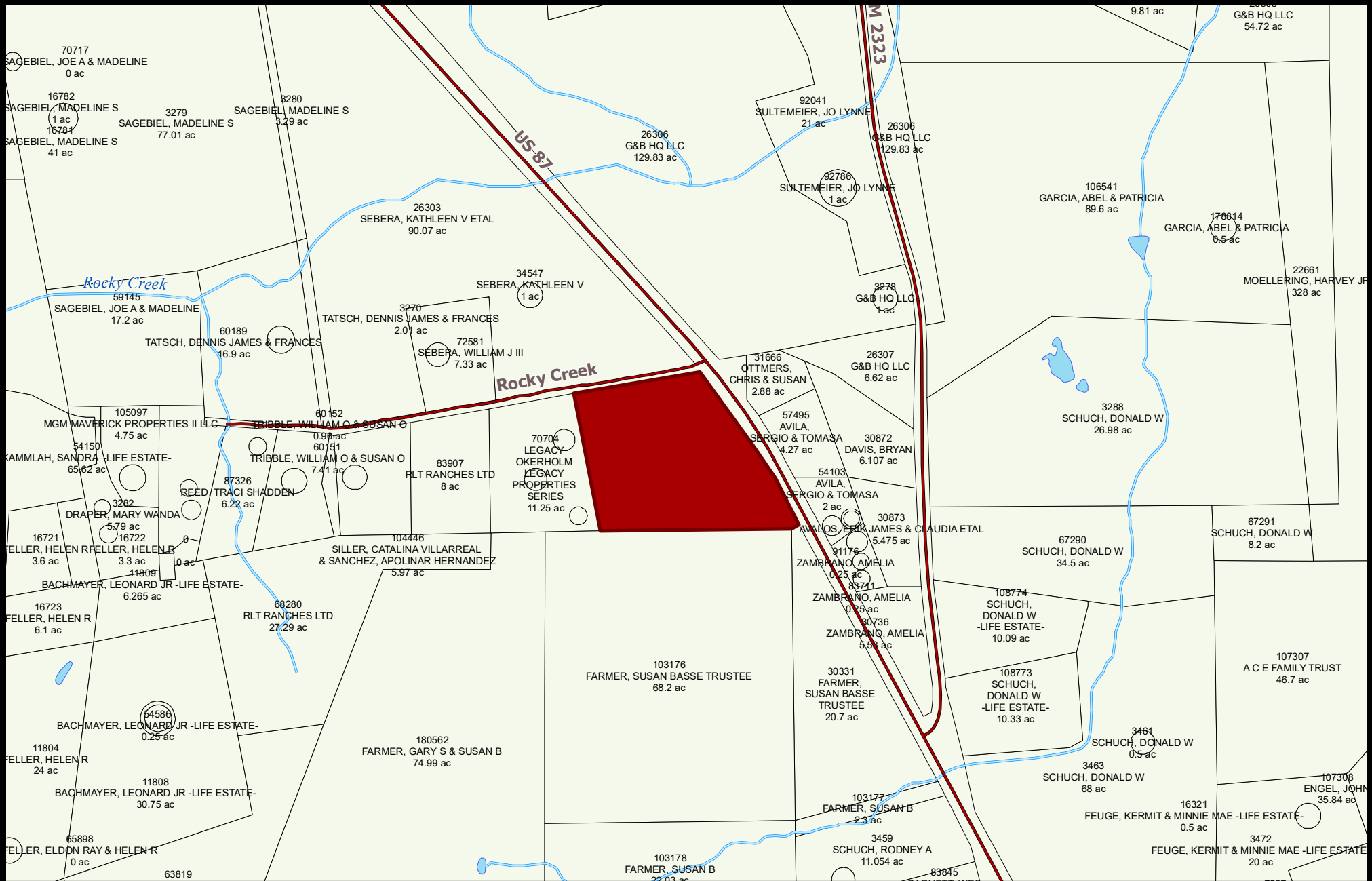


112 N. Edison St., Fredericksburg, TX 78624
Jeremy Lacy (830) 225-0595
www.AndersRanchRealty.com

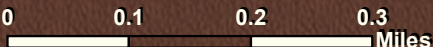


Anders Realty
PURVEYORS OF FINE TEXAS RANCHES

STONEFIELD RANCH | 23.84 ± AC | GILLESPIE



1 inch = 833.33 feet

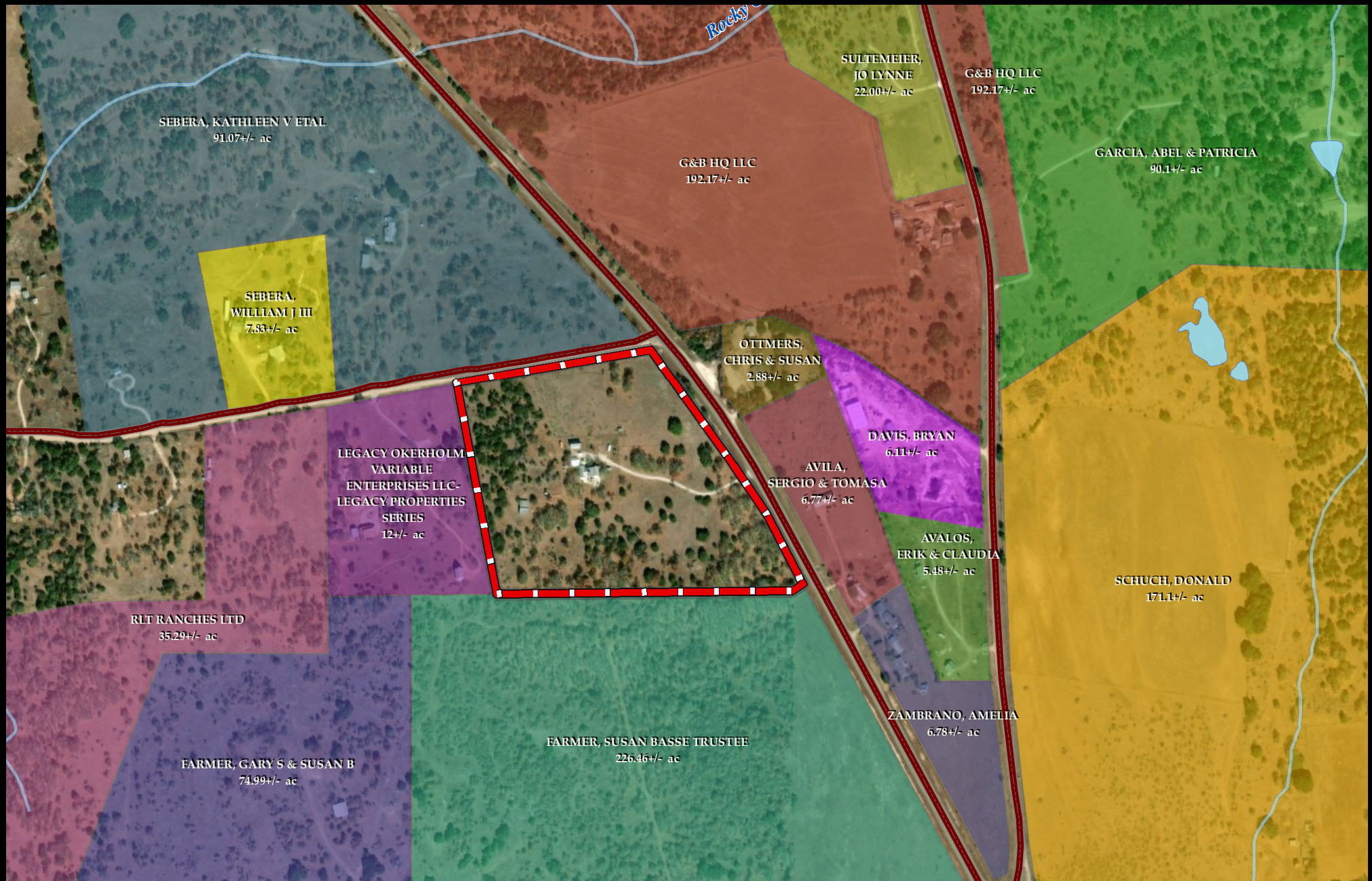


112 N. Edison St., Fredericksburg, TX 78624
Jeremy Lacy (830) 225-0595
www.AndersRanchRealty.com



Anders Realty
PURVEYORS OF FINE TEXAS RANCHES

STONEFIELD RANCH | 23.84 ± AC | GILLESPIE



1 inch = 541.67 feet

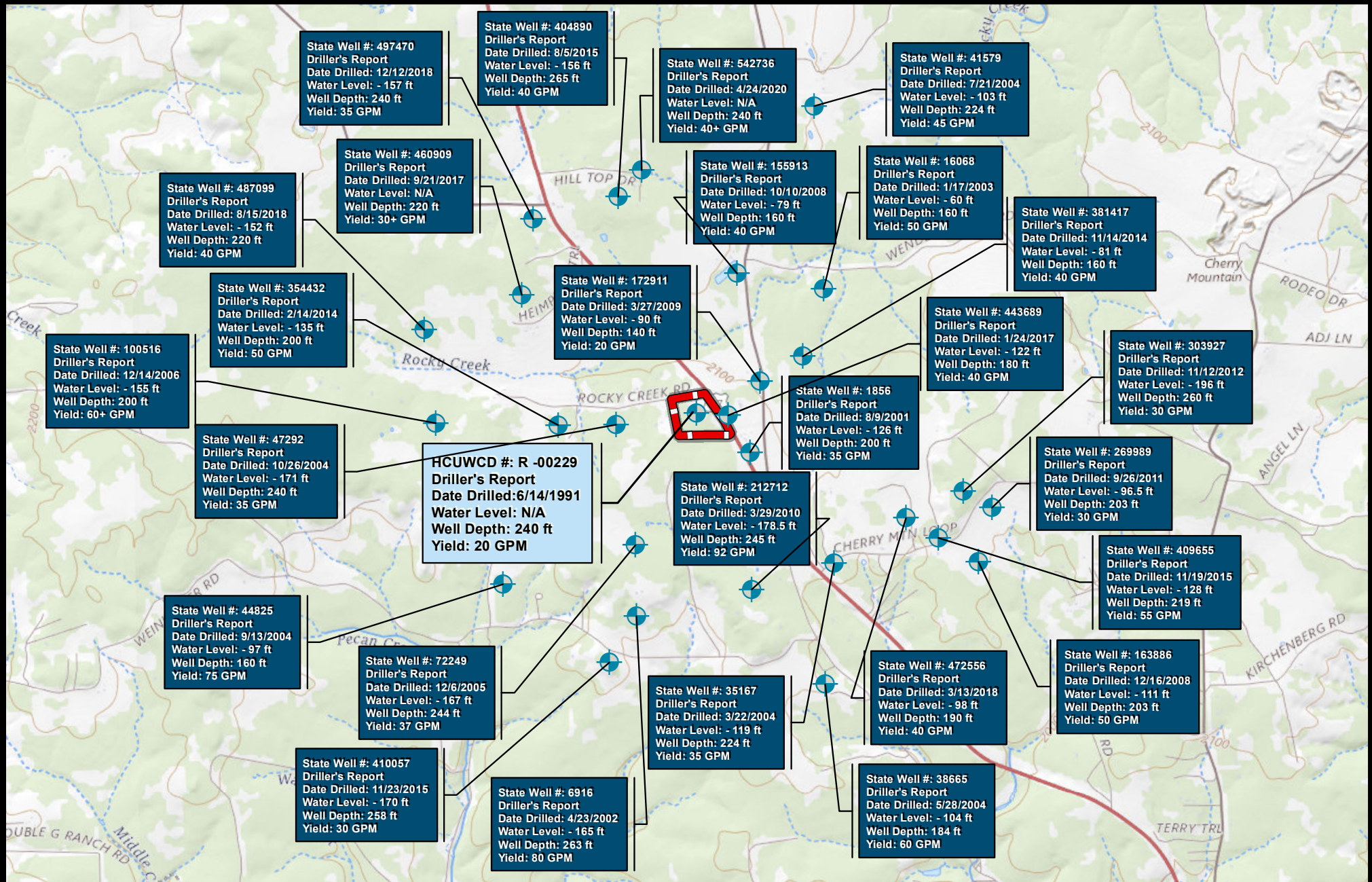


112 N. Edison St., Fredericksburg, TX 78624
 Jeremy Lacy (830) 225-0595
www.AndersRanchRealty.com



Anders Realty
 PURVEYORS OF FINE TEXAS RANCHES

STONEFIELD RANCH | 23.84 ± AC | GILLESPIE



1 inch = 3,166.67 feet







112 N. Edison St., Fredericksburg, TX 78624
 Jeremy Lacy (830) 225-0595
www.AndersRanchRealty.com

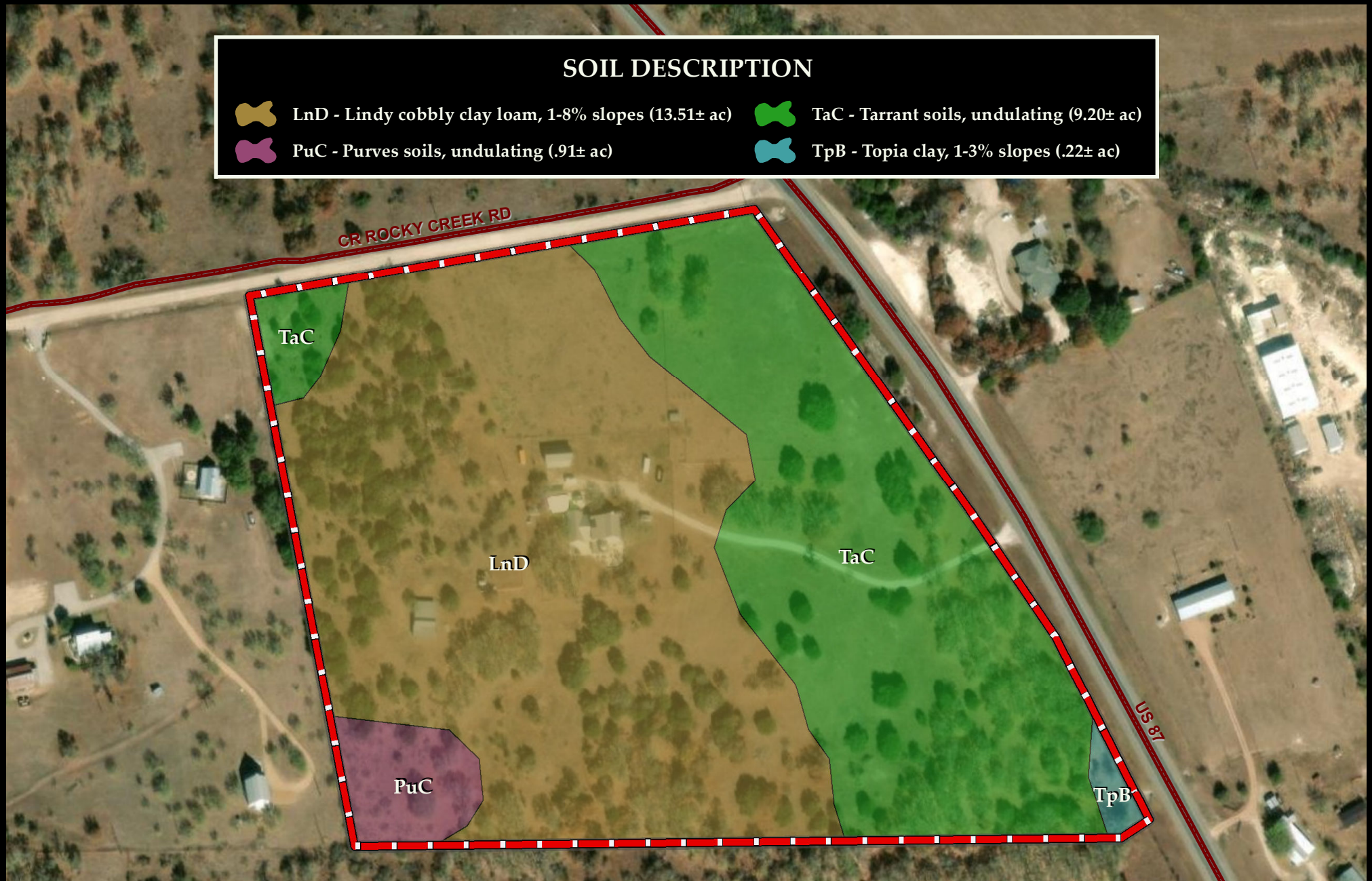


Anders Realty
 PURVEYORS OF FINE TEXAS RANCHES

STONEFIELD RANCH | 23.84 ± AC | GILLESPIE

SOIL DESCRIPTION

-  LnD - Lindy cobbly clay loam, 1-8% slopes (13.51± ac)
-  TaC - Tarrant soils, undulating (9.20± ac)
-  PuC - Purves soils, undulating (.91± ac)
-  TpB - Topia clay, 1-3% slopes (.22± ac)



1 inch = 208.33 feet

0 0.025 0.05 0.075 Miles



112 N. Edison St., Fredericksburg, TX 78624
Jeremy Lacy (830) 225-0595
www.AndersRanchRealty.com



Anders Realty
PURVEYORS OF FINE TEXAS RANCHES